



Essoldo House, Old Church Street, Chelsea, SW3

£995 per week

Bedrooms	2
Bathrooms	2
Furnished	Unfurnished
Availability	now
Outdoor Space	None
Parking	None
Council Tax	Council Tax Band G (RBKC)

CONTEMPORARY 2 BEDROOM RESIDENCE

Set within Chelsea's conservation area, Essoldo House is a unique new build residential development, located on the south side of the iconic Kings Road, between Old Church Street and Paultons Square.

Striking contemporary design and the highest quality materials underpin every aspect of these modern Chelsea residences, Essoldo House blends 21st Century personality and character with the fabric of traditional Chelsea.

This bright and contemporary 2 bedroom apartment is located on the 3rd floor, with lift access. It overlooks the Kings Road and offers the perfect contemporary living accommodation.

Features

Entrance, Reception Room/Dining Space, State Of The Art Open Plan



SUSAN METCALFE
RESIDENTIAL

Kitchen, Double Bedroom, Further Double Bedroom With En-Suite Dressing Room And En-Suite Shower Room, Bathroom, Lift, Concierge, Video Entry-Phone.

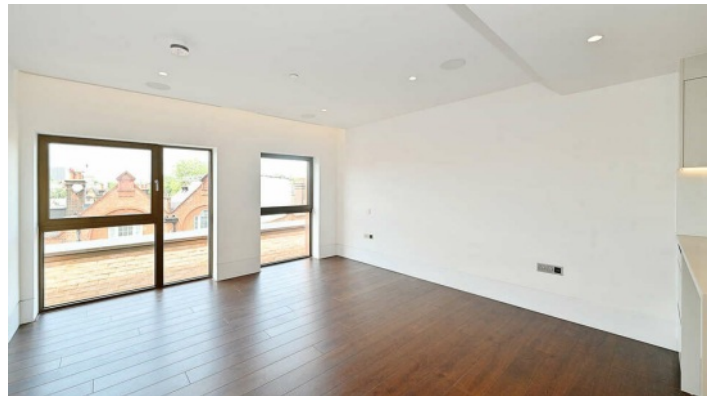


10 HOLLYWOOD ROAD CHELSEA SW10 9HY
020 7581 3349 www.susanmetcalfe.com info@susanmetcalfe.com





SUSAN METCALFE
RESIDENTIAL



10 HOLLYWOOD ROAD CHELSEA SW10 9HY
020 7581 3349 www.susanmetcalfe.com info@susanmetcalfe.com

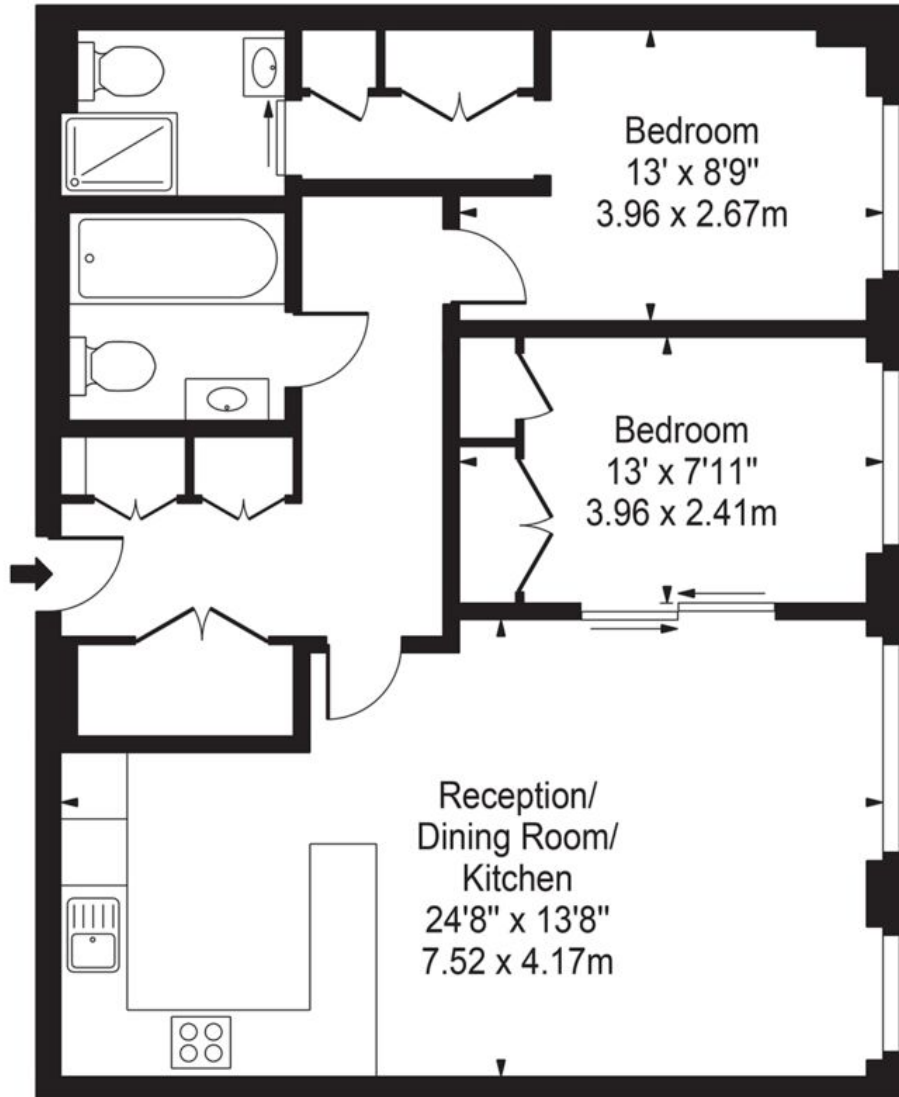




SUSAN METCALFE
RESIDENTIAL

Essoldo House

Approx. Gross Internal Area 771 Sq Ft - 71.60 Sq M



Third Floor

For Illustration Purposes Only - Not To Scale

This floor plan should be used as a general outline for guidance only and does not constitute in whole or in part an offer or contract. Any intending purchaser or lessee should satisfy themselves by inspection, searches, enquiries and full survey as to the correctness of each statement. Any areas, measurements or distances quoted are approximate and should not be used to value a property or be the basis of any sale or let.



10 HOLLYWOOD ROAD CHELSEA SW10 9HY

020 7581 3349

www.susanmetcalfe.com

info@susanmetcalfe.com





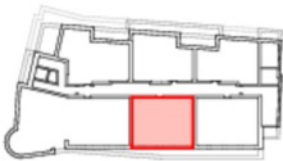
SUSAN METCALFE
RESIDENTIAL

FLAT 8 - LEVEL +3

ESSOLDO HOUSE



KEY PLAN



KEY	
S.C	Service Cupboard
W	Washing Machine
WD	Washing Machine Dryer
F	Fridge/Freezer
DW	Door Handle

ACCOMMODATION AREA SCHEDULE:	
KITCHEN/LIVING/DINING:	26.2m ² / 282 sqft
BEDROOM 1:	10m ² / 107.6 sqft
BEDROOM 2:	9.3m ² / 100.1 sqft
FAMILY BATHROOM:	3.8m ² / 40.9 sqft
ENSUITE:	3.2m ² / 34.4 sqft
G.I.A.:	71.6m² / 771 sqft



10 HOLLYWOOD ROAD CHELSEA SW10 9HY

020 7581 3349

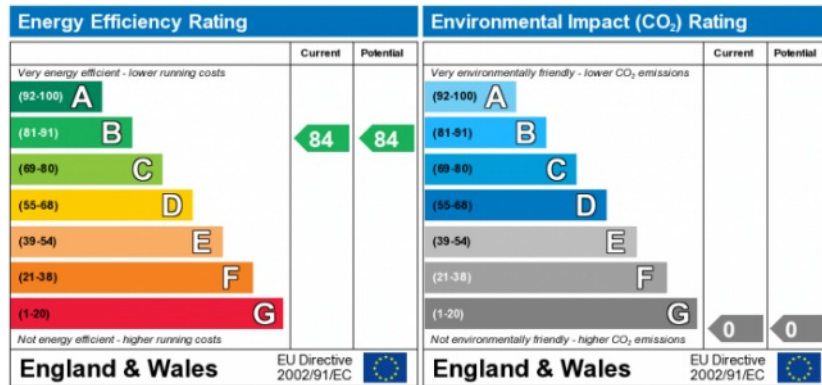
www.susanmetcalfe.com

info@susanmetcalfe.com





SUSAN METCALFE
RESIDENTIAL



The energy efficiency rating is a measure of the overall efficiency of a home. The higher the rating the more energy efficient the home is and the lower the fuel bills will be.

The environmental impact rating is a measure of a home's impact on the environment in terms of carbon dioxide (CO₂) emissions. The higher the rating the less impact it has on the environment.



INFORMATION FOR TENANTS

After an offer is accepted by the Landlord, which is subject to contract and acceptable references, the first rent and a deposit are payable in advance. Any rent advertised is pure rent.

IMPORTANT NOTICE

Susan Metcalfe Residential, their clients and any joint agents give notice that: 1: They are not authorised to make or give any representations or warranties in relation to the property either here or elsewhere, either on their own behalf or on behalf of their client or otherwise. They assume no responsibility for any statement that may be made in these particulars. These particulars do not form part of any offer or contract and must not be relied upon as statements or representations of fact. 2: Any areas, measurements or distances are approximate. The text, photographs and plans are for guidance only and are not necessarily comprehensive. It should not be assumed that the property has all necessary planning, building regulation or other consents and Susan Metcalfe Residential have not tested any services, equipment or facilities.

10 HOLLYWOOD ROAD CHELSEA SW10 9HY

020 7581 3349 www.susanmetcalfe.com info@susanmetcalfe.com

