



Farrier Walk, Chelsea, SW10

£1,200 per week

Bedrooms	3
Bathrooms	2
Furnished	Furnished
Availability	now
Outdoor Space	None
Parking	Residents Permit
Council Tax	Council Tax Band: F (RBKC)

SUPERB 3-BEDROOM LATERAL APARTMENT

A beautiful first floor, lateral, 3-bedroom apartment in Farrier Walk, a private gated residential development just off the Fulham Road. Presented in excellent condition, the interior-designed apartment comes fully furnished and is available for an 8-month rental contract.

Features

Entrance Hall, Reception Room, Kitchen, 3 Double Bedrooms, 2 Bathrooms, Porter.



SUSAN METCALFE
RESIDENTIAL



10 HOLLYWOOD ROAD CHELSEA SW10 9HY
020 7581 3349 www.susanmetcalfe.com info@susanmetcalfe.com

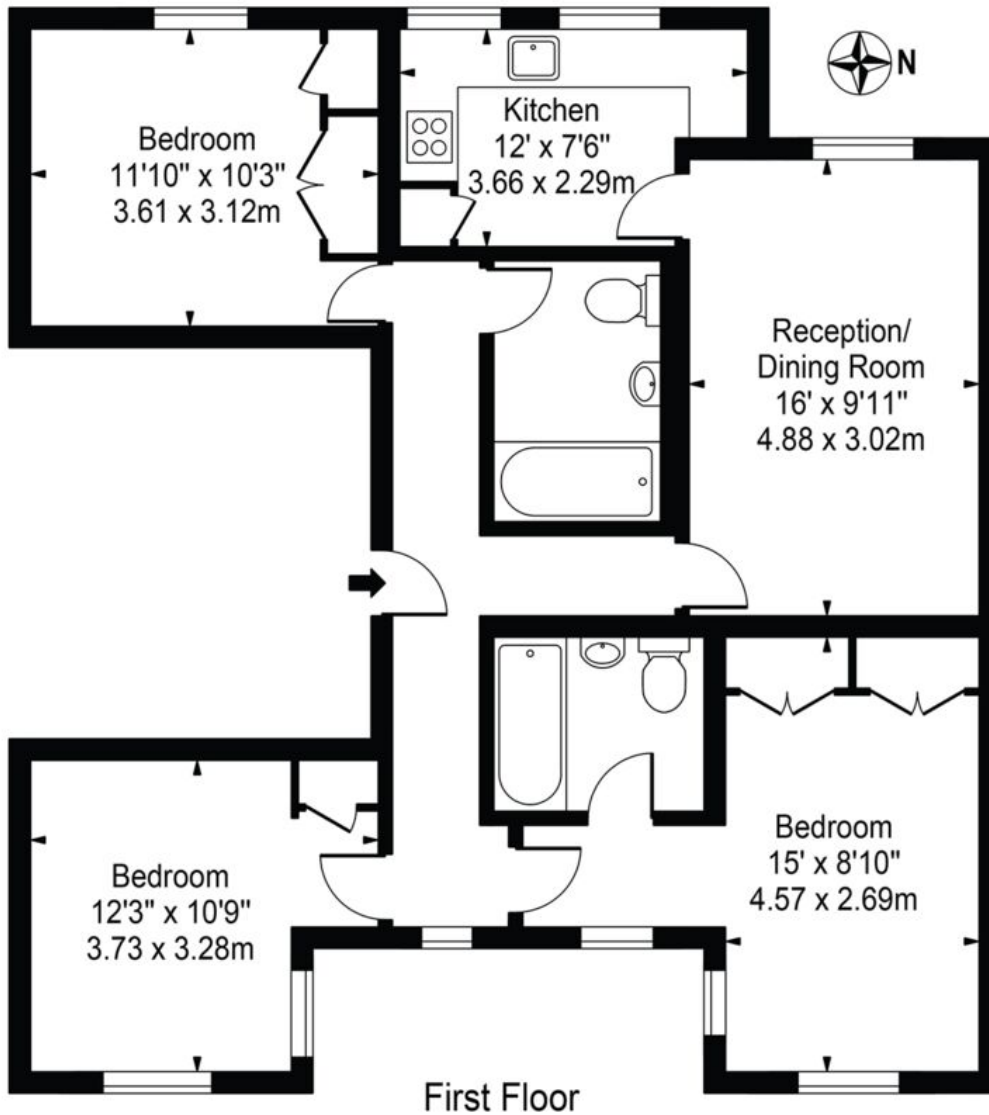




SUSAN METCALFE
RESIDENTIAL

Farrier Walk

Approx. Gross Internal Area 881 Sq Ft - 81.85 Sq M



First Floor

For Illustration Purposes Only - Not To Scale

This floor plan should be used as a general outline for guidance only and does not constitute in whole or in part an offer or contract. Any intending purchaser or lessee should satisfy themselves by inspection, searches, enquiries and full survey as to the correctness of each statement. Any areas, measurements or distances quoted are approximate and should not be used to value a property or be the basis of any sale or let.



SUSAN METCALFE
RESIDENTIAL

Energy Efficiency Rating		Environmental Impact (CO ₂) Rating	
Current	Potential	Current	Potential
Very energy efficient - lower running costs (92-100) A (81-91) B (69-80) C (55-68) D (39-54) E (21-38) F (1-20) G Not energy efficient - higher running costs		Very environmentally friendly - lower CO ₂ emissions (92-100) A (81-91) B (69-80) C (55-68) D (39-54) E (21-38) F (1-20) G Not environmentally friendly - higher CO ₂ emissions	
	71 → 73		0 → 0
England & Wales EU Directive 2002/91/EC		England & Wales EU Directive 2002/91/EC	

The energy efficiency rating is a measure of the overall efficiency of a home. The higher the rating the more energy efficient the home is and the lower the fuel bills will be.

The environmental impact rating is a measure of a home's impact on the environment in terms of carbon dioxide (CO₂) emissions. The higher the rating the less impact it has on the environment.



INFORMATION FOR TENANTS

After an offer is accepted by the Landlord, which is subject to contract and acceptable references, the first rent and a deposit are payable in advance. Any rent advertised is pure rent.

IMPORTANT NOTICE

Susan Metcalfe Residential, their clients and any joint agents give notice that: 1: They are not authorised to make or give any representations or warranties in relation to the property either here or elsewhere, either on their own behalf or on behalf of their client or otherwise. They assume no responsibility for any statement that may be made in these particulars. These particulars do not form part of any offer or contract and must not be relied upon as statements or representations of fact. 2: Any areas, measurements or distances are approximate. The text, photographs and plans are for guidance only and are not necessarily comprehensive. It should not be assumed that the property has all necessary planning, building regulation or other consents and Susan Metcalfe Residential have not tested any services, equipment or facilities.

10 HOLLYWOOD ROAD CHELSEA SW10 9HY



020 7581 3349

www.susanmetcalfe.com

info@susanmetcalfe.com

