



SUSAN METCALFE
RESIDENTIAL



Albert Hall Mansions, Kensington, SW7

£1,750,000

Bedrooms	1
Bathrooms	1
Surface	987 sqft
Tenure	Leasehold plus share of Freehold 983 years
Service Charge	£6,192
Outdoor Space	None
Parking	Residents Permit
Council Tax	Council Tax Band: F (Westminster)

ELEGANT AND IMPRESSIVE ONE-BEDROOM APARTMENT

A recently refurbished one bedroom raised ground floor apartment with grand proportions, located in the sought after Albert Hall Mansions. Offering spacious rooms and high ceilings throughout, this lateral apartment has been renovated to a high standard featuring its own private entrance and measures approximately 987sqft. The apartment has a large reception room which is ideal for entertaining, a spacious double bedroom, separate modern fitted kitchen and bathroom with both a shower and bath. There is the added benefit of 24 hour porters within the building. Albert Hall Mansions is located next to the Royal Albert Hall, to the south of Hyde Park and to the west of Exhibition Road. The access gates to Hyde Park and the Albert Memorial are a short walk directly across from the building. The surrounding



020 7581 3349

10 HOLLYWOOD ROAD CHELSEA SW10 9HY

www.susanmetcalfe.com

info@susanmetcalfe.com





SUSAN METCALFE
RESIDENTIAL

area offers easy access to the world class restaurants, shops, hotels and facilities that Kensington, Knightsbridge and South Kensington have to offer.

Features

Private Entrance, Entrance Hall, Reception Room, Kitchen, Double Bedroom, Bathroom, 24 Hour Porter



10 HOLLYWOOD ROAD CHELSEA SW10 9HY

020 7581 3349 www.susanmetcalfe.com info@susanmetcalfe.com





SUSAN METCALFE
RESIDENTIAL



10 HOLLYWOOD ROAD CHELSEA SW10 9HY
020 7581 3349 www.susanmetcalfe.com info@susanmetcalfe.com

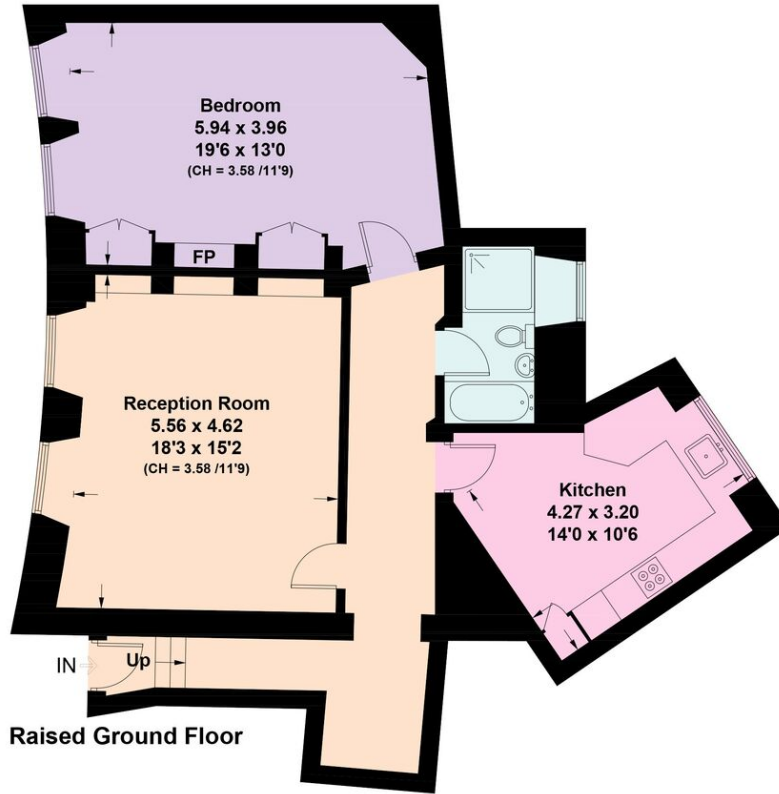




SUSAN METCALFE
RESIDENTIAL

Albert Hall Mansions, Kensington Gore, SW7

Approximate Floor Area = 91.7 sq m / 987 sq ft
Including Limited Use Area (0.8 sq m / 9 sq ft)



This plan is for layout guidance only. Not drawn to scale unless stated. Windows and door openings are approximate. Whilst every care is taken in the preparation of this plan, please check all dimensions, shapes and compass bearings before making any decisions reliant upon them. (ID987398)



10 HOLLYWOOD ROAD CHELSEA SW10 9HY

020 7581 3349

www.susanmetcalfe.com

info@susanmetcalfe.com



